

Thank you for your purchase!

Below are instructions on how to install my fonts on PC and Mac.

Please note the download is compressed into a Zip File, so you need relevant software to initially unzip the file you download. Most computers are equipped.

Windows users can download free 7-zip software (for extracting / opening zip folders)

<http://www.7-zip.org/>

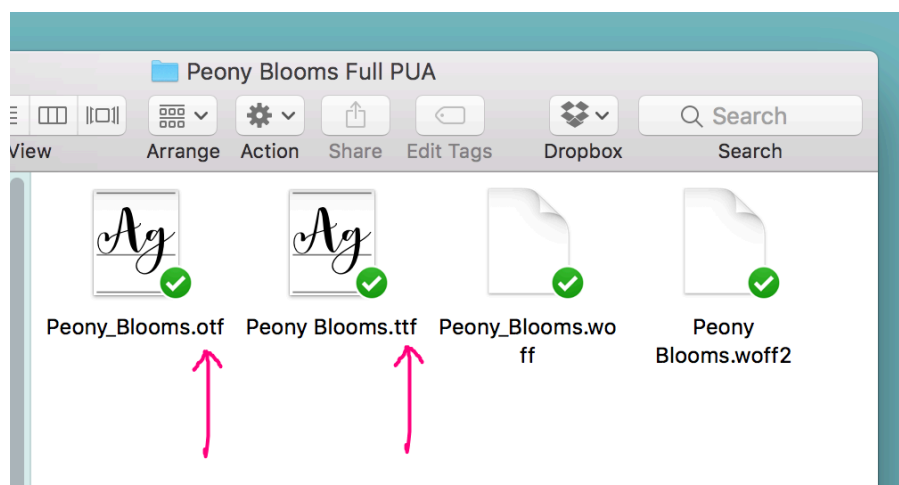
INSTALLATION PC & MAC

- Once the file has downloaded you must first unzip the file. Most systems will do this automatically with a double click.
- Next locate either the otf OR ttf file. You can do this by looking at the letters after the font name, within the zip file you just downloaded. You will choose only one format.

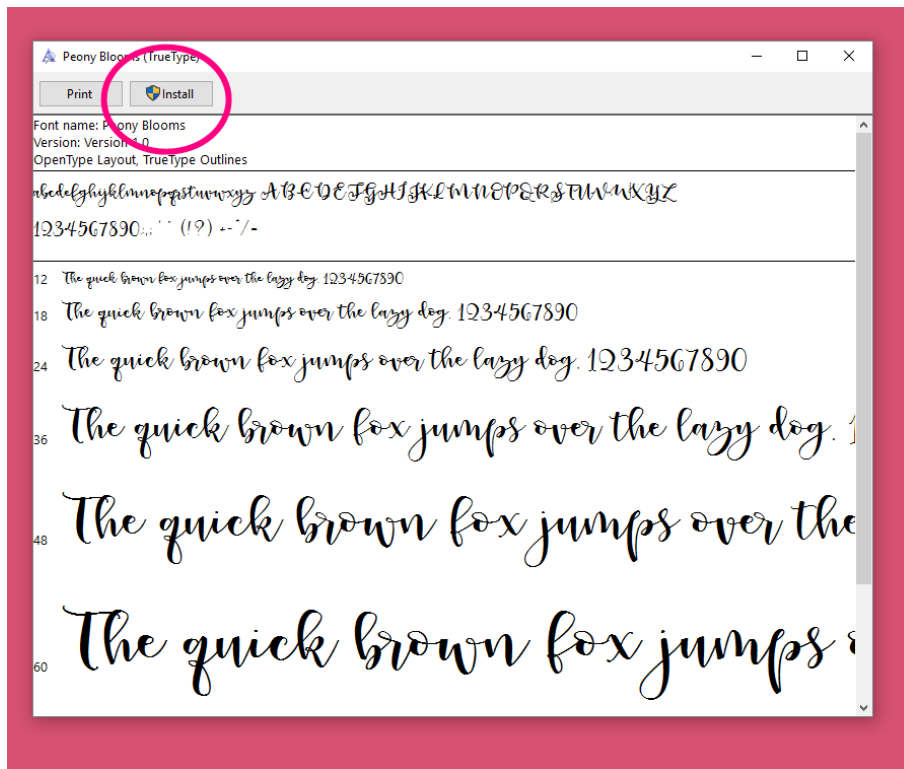
(WINDOWS PC SCREENSHOT)

Name	Date modified	Type	Size
Peony_Blooms	4/4/2017 3:53 AM	OpenType font file	1,303 KB
Peony Blooms	3/29/2017 8:28 PM	TrueType font file	552 KB
Peony_Blooms.woff	4/4/2017 3:56 AM	WOFF File	269 KB
Peony Blooms.woff2	4/4/2017 3:56 AM	WOFF2 File	210 KB

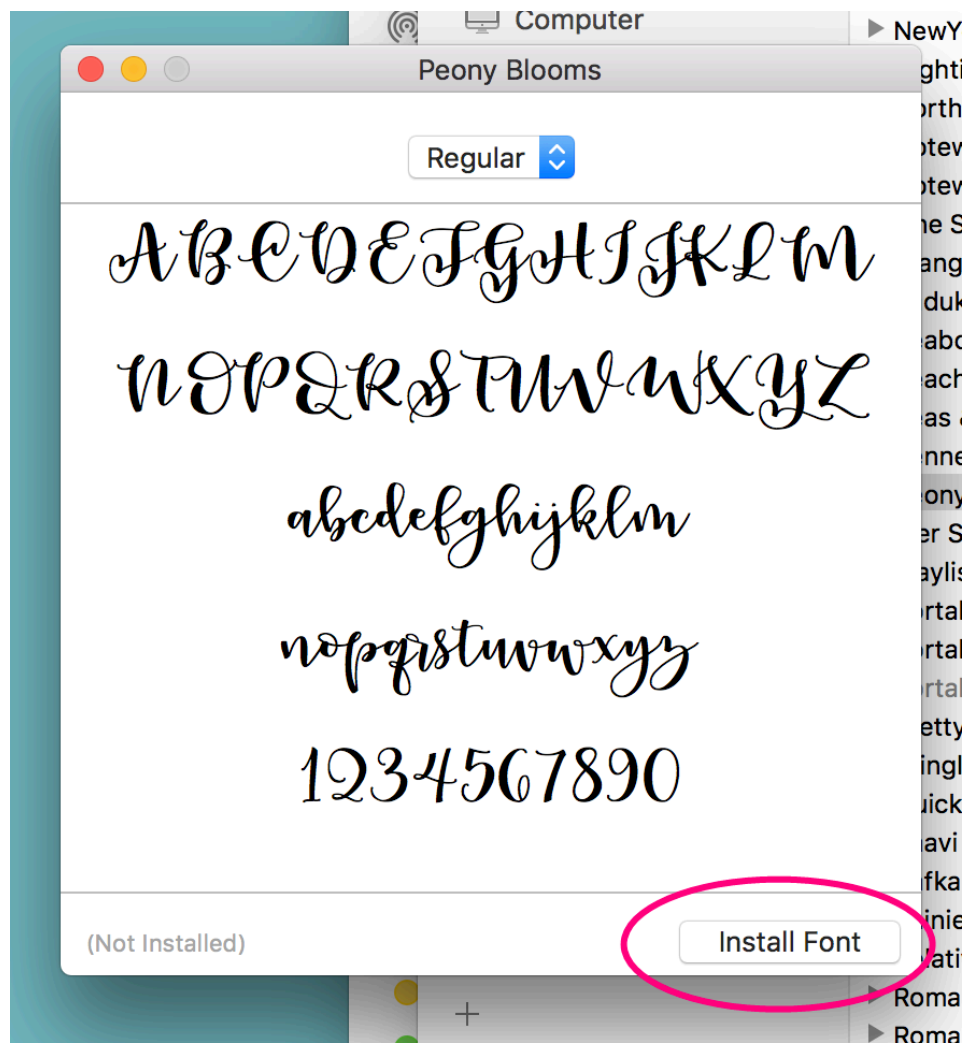
(MAC OS SCREENSHOT)



- Double click to open the ttf or otf font file.
- On Windows / PC - A font preview window will open. Click Install in the upper left corner.



- On Mac/ OS – *Fontbook* will open a preview window. Click Install.

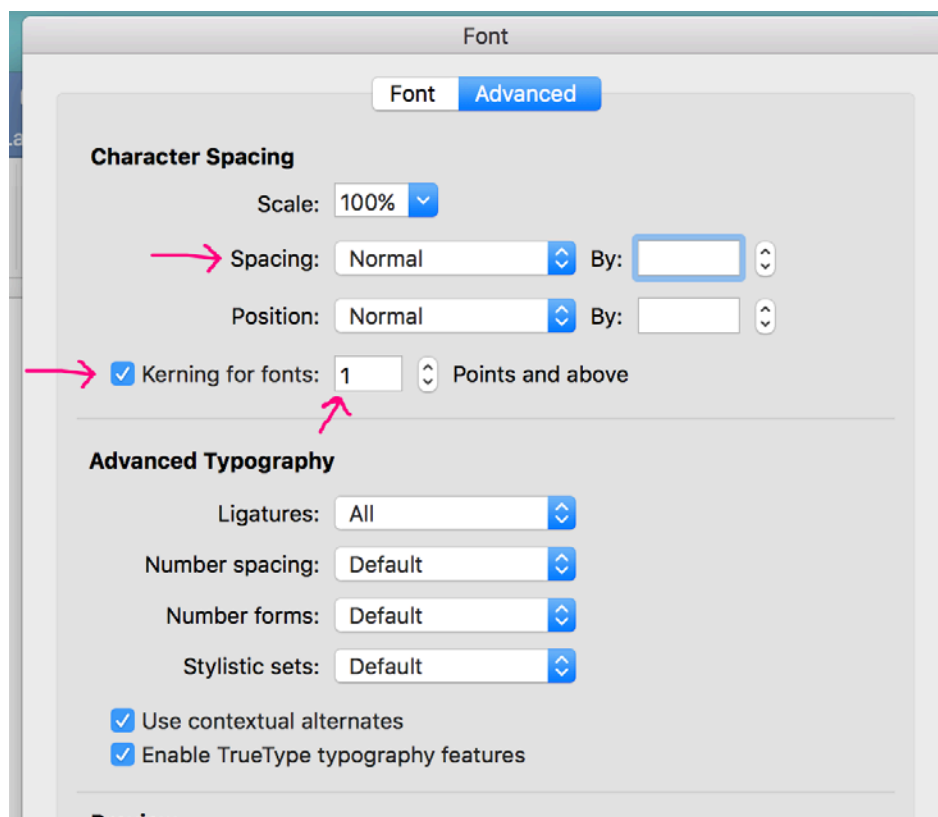


- Wa La! That's it!
- The font is now installed on your system. It is now available, to type with, in any program you use fonts.
- You may need to close and re-open any programs to refresh your font list. *Cricut and Silhouette users will need to completely close and re-open programs.

Troubleshooting Character Spacing in Microsoft Word:

In MS Word:

- at the beginning of a document, before you start typing
 - go to the font format menu
 - click the "advanced" tab
 - check the box "kerning for fonts"
 - put a number 1 in the box.



- If you have already started typing, you'll need to highlight the text.
 - "Word Art" in word has different default spacing for each style. Each time you change styles, you'll need to double check the "character spacing" be sure it's at zero.
- Follow the same instructions, as above, and make sure the spacing is at "normal"

Emily Spadoni

CREATIVE TYPE & DESIGN, INC.

WEBSITE



CONTACT



LICENSE PDF



CREATIVE MARKET



ETSY



Thank you!

Please don't hesitate to contact me with any questions.

©2018 Emily Spadoni Creative Type & Design, Inc.